

SHORE JUNCTION

WHERE IDEAS COLLIDE AND FUTURE PATHS FORCE



A NOTE FROM OUR COMMUNITY DIRECTOR - MELANIE BARR

The Shore Junction business and community networks are already vocal ambassadors of our initiative and now we have huge support from the high schools! Shore Junction will be open to any young person from the North of the bridge to Warkworth.

This month I have been working with students and teachers from a number of schools in the Birkenhead, Glenfield, Takapuna, Northcote and Westlake areas, it is so fulfilling to see the understanding and clarity on the faces of teachers when they see how Shore Junction will support our young people, the community, and the future of work.

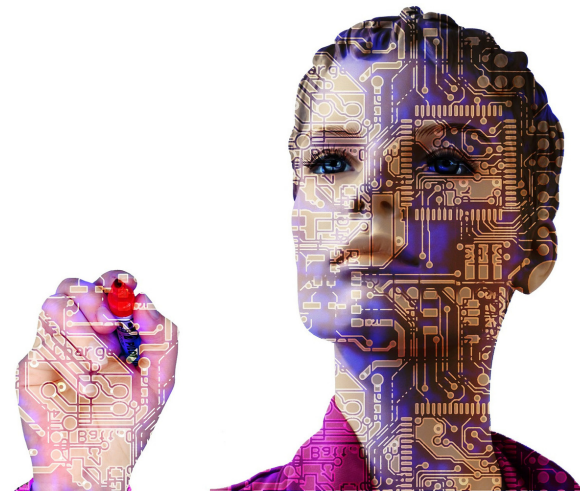
On the second page, you will see we had a tour with Birkenhead College - These students 'get it', and they could not stop thanking us for creating such a facility for them and their peers. It is these moments that make me so happy to be part of this initiative.

INTRODUCING OUR MAKERSPACE

Shore Junction is first and foremost an innovation centre promoting community and belonging for our young people. As part of "two floors of amazing" we will have a full Makerspace.

These spaces help to prepare those who need the critical 21st century skills in the fields of science, technology, engineering and maths (STEM). They provide hands on learning, help with critical thinking skills and even boost self-confidence. Makerspaces can have a significant impact on student learning and development, helping them to shift from being passive consumers of information and products to active creators and innovators

Some of the skills that are learned in a makerspace pertain to electronics, 3D printing, 3D modelling, coding, robotics and even woodworking. Makerspaces also foster entrepreneurial mindset and are being utilised as incubators and accelerators for business startups.



WHAT IS SHORE JUNCTION

Shore Junction is a youth innovation hub in Takapuna designed to provide a safe space for young people to connect, belong, collaborate, learn and innovate.

It will provide opportunities for young people to connect socially outside of school, and to access a range of facilities, programmes and events that are designed to support their wellbeing and accelerate their potential.

Shore Junction will support young people to prepare for their future pathways by supporting them to develop key skills and by connecting them to business and enterprise.

The Shore Junction building offers "two floors of amazing" - flexible, shared spaces for young people to convene and collaborate. The use of space can be continuously refined in response to the needs and ideas of young people.

VISITORS TO SHORE JUNCTION

Students from Birkenhead College tour Shore Junction and give some great suggestions



Birkenhead College students eagerly toured the pre-build facility last month, looking in all the corners as if they had already made themselves at home. Embracing everything, from the accidental connections space, music room, recording studio, to the tech zone and business and enterprise break out rooms.

Ranged between Year 11 - 13, these young people understood instantly what Shore Junction was about and what it would offer. Enthusiastically asking about the different Pillars and Spaces housed in the building,

Following the tour, Mel visited Birkenhead College to host a focus group lunch with the same students. The group was asked when leaving the tour to think about what would attract them to come to Shore Junction and what barriers might exist that hinders them from becoming a member that we can overcome now, before we open.

It was unanimous that what AUT Millenium is for sports, Shore Junction will be for everything else. This group of Birkenhead College influencers are at a junction in their life where they are thinking about their future and career possibilities, they know they don't have the answers, but they also don't know what questions to ask. They have dreams and passions - but how does that translate into a career. Their concerns weren't with school rivalries, the location or even if there was a membership cost (there isn't!), but more-so around monitoring equipment use, making sure no one was left out, and having the opportunity to speak with trusted adults who are experts in their field.

The group already mirrors Shore Junction's ethos and values, explaining that by attending young people like them, who make the conscience decision to go to Shore Junction, there will be an unwritten understanding about respecting peers, the building, equipment and staff.

Hayden Burr and the ICT Team join the Shore Junction community

Shore Junction has partnered with Integrated Control Technology (ICT) based in Rosedale. ICT are committed to providing systems that help keep people, property, operations and information safe.

After a tour of Shore Junction and a look into how we want to protect our young people onsite, ICT will be supplying Shore Junction with Access Control and Intrusion Detection to ensure our young people remain safe while on site and their projects are secure outside of operating hours. ICT will also be supplying us with equipment card readers to assist us with building health and safety and data monitoring.

With more than 35% of staff dedicated to research and development, innovation is a core part of the ICT DNA. Aligning perfectly with the values and mission of Shore Junction.

Thank you for joining the Shore Junction community ICT!



WWW.SHOREJUNCTION.NZ



@shorejunction



fb.com/shorejunction



@shorejunction



linkedin.com/company/shore-junction

PAGE 2

3 Mary Poynton Cres,
Takapuna, Auckland 0622
Tel: (+64) 021-242-1197
mel@shorejunction.nz